

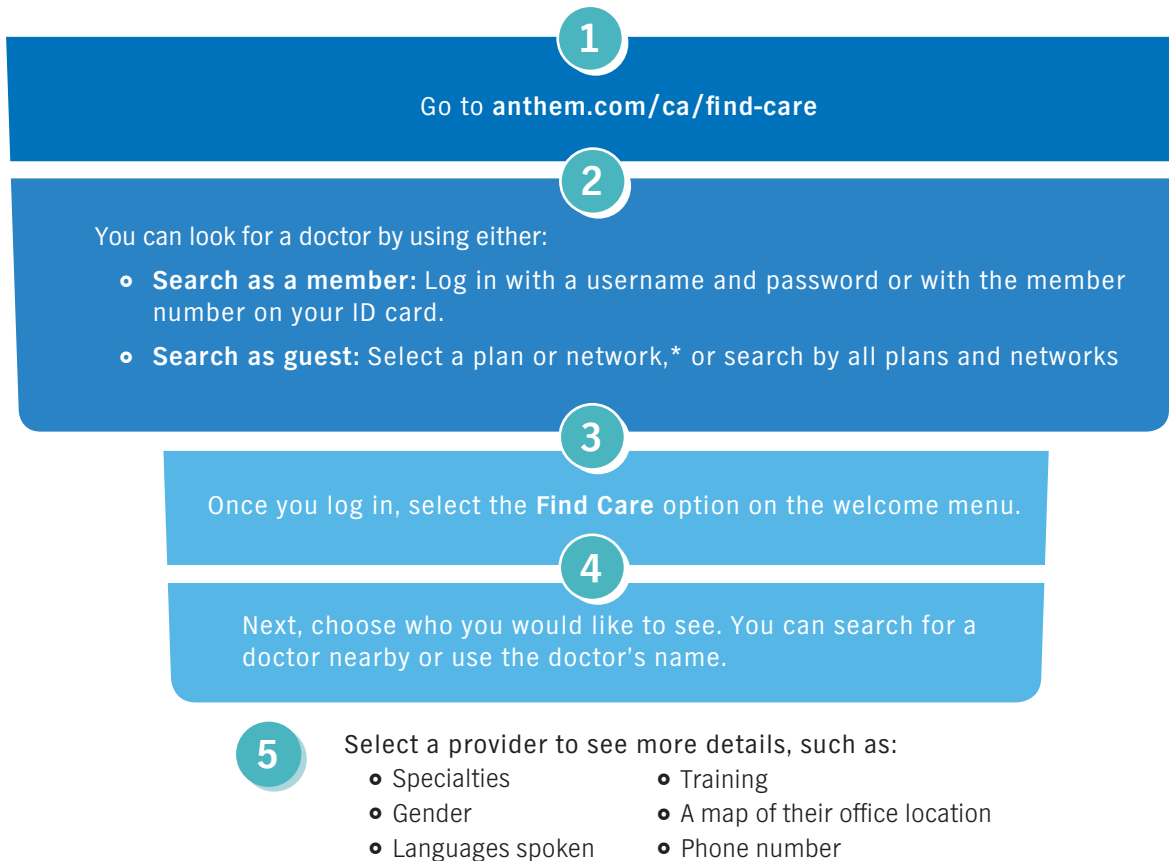
Are you looking for a doctor?

It's easy to find one online

The right doctor can have a positive impact on your health and well-being. Choosing one in your plan can save you money as well. The **Find Care** tool helps you locate doctors, dentists, eye care professionals, hospitals, labs, and other health care providers in your plan. If you decide to see a doctor outside your plan, your costs will be higher and your care may not be covered. Therefore, it is a good idea to learn how this convenient tool can help you find care.



How to find a doctor near you:



Health information that goes where you go

The **Sydney Health app** makes it easy to find information about your plan benefits wherever you are. The app keeps everything you need to know about your plan personalized and in one place. Download the app today.

* If you don't know the name of the plan or network, check with your human resources department or benefits administrator.